



## PERFORMANCE AT A GLANCE

INDIVIDUAL	Future Secure			Future Income			Future Balance			Future Maximise		
	Absolute Return	Simple Annual Return	CAGR	Absolute Return	Simple Annual Return	CAGR	Absolute Return	Simple Annual Return	CAGR	Absolute Return	Simple Annual Return	CAGR
Since Inception	112.93%	12.97%	9.07%	132.61%	15.23%	10.18%	96.93%	11.13%	8.09%	120.62%	13.85%	9.51%

INDIVIDUAL	Future Pension Secure			Future Pension Balance			Future Pension Growth			Future Pension Active		
	Absolute Return	Simple Annual Return	CAGR	Absolute Return	Simple Annual Return	CAGR	Absolute Return	Simple Annual Return	CAGR	Absolute Return	Simple Annual Return	CAGR
Since Inception	135.72%	16.01%	10.64%	141.24%	16.66%	10.95%	175.38%	20.69%	12.69%	212.64%	25.08%	14.39%

INDIVIDUAL	Future Dynamic Growth		
	Absolute Return	Simple Annual Return	CAGR
Since Inception	80.99%	10.83%	8.25%

INDIVIDUAL	Future NAV Guarantee Fund		
	Absolute Return	Simple Annual Return	CAGR
Absolute Return	47.43%	6.86%	5.77%

**Highest NAV Guaranteed 14.7698**

INDIVIDUAL	Future Apex			INDIVIDUAL	Future Opportunity Fund		
	Absolute Return	Simple Annual Return	CAGR		Absolute Return	Simple Annual Return	CAGR
Since Inception	91.73%	12.47%	9.26%	Since Inception	59.27%	8.94%	7.28%

Group	Future Group Secure			Future Group Balance			Future Group Maximise		
	Absolute Return	Simple Annual Return	CAGR	Absolute Return	Simple Annual Return	CAGR	Absolute Return	Simple Annual Return	CAGR
Since Inception	0.00%	0.00%	0.00%	86.78%	12.03%	9.05%	98.48%	12.48%	9.08%

**ABOUT THE FUND**

**OBJECTIVE**  
To provide potentially high returns to unit holders by investing primarily in equities to target growth in capital value of assets. The fund will also invest to a certain extent in govt. securities, corporate bonds and money market instruments. The risk profile of the fund is high.

**Fund Manager Details**

Fund Manager	No. Of Funds Managed		
	Equity	Debt	Hybrid
Niraj Kumar	4	3	7
Biswarup Mohapatra	4	-	7

**ASSET ALLOCATION**

Composition	Min.	Max.	Actual
Fixed Interest Investments	0.00%	40.00%	0.00%
Cash and Money Market	0.00%	50.00%	4.68%
Equity	50.00%	100.00%	95.32%

**RISK RETURN PROFILE**

Risk	High
Return	High

**DATE OF INCEPTION**

23rd December 2009

**FUND PERFORMANCE as on 30th Apr 2017**

Returns since Publication of NAV

Absolute Return	91.73%
Simple Annual Return	12.47%
CAGR Return	9.26%

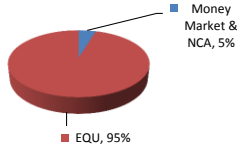
**NAV as on 28th Apr 2017**

19.17299

**AUM as on 30th Apr 2017 (Rs. In Lakhs)**

1,685.77

**ASSET ALLOCATION**



**PORTFOLIO AS ON 30th Apr 2017**

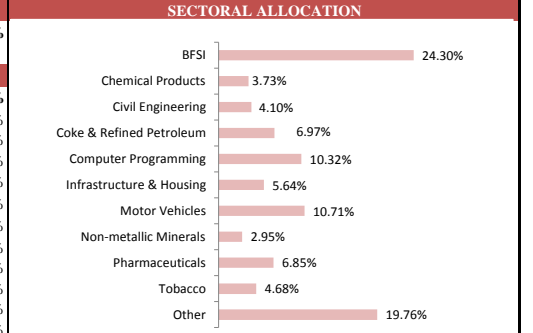
**SECURITIES**  
**MONEY MARKET INSTRUMENTS & NCA** **4.68%**

**SECURITIES** **HOLDINGS**

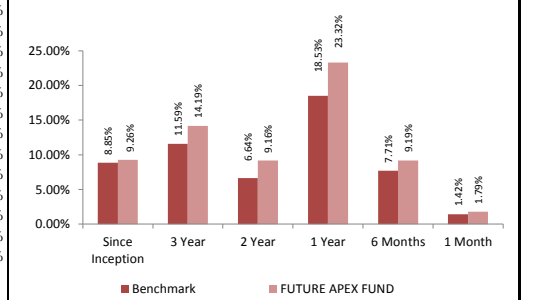
**EQUITY 95.32%**

Infosys Technologies Ltd.	5.72%
HDFC Bank Ltd.	5.30%
ITC Ltd.	4.68%
ICICI Bank Ltd.	4.30%
Larsen & Toubro Ltd.	4.10%
HDFC Ltd.	3.60%
Reliance Industries Ltd.	3.30%
Sun Pharmaceuticals Industries Ltd.	3.13%
TATA Motors Ltd.	3.10%
Axis Bank Ltd.	2.81%
State Bank of India	2.76%
TATA Consultancy Services Ltd.	2.71%
Maruti Suzuki India Ltd.	2.38%
Mahindra and Mahindra Ltd.	2.35%
TATA Motors Ltd. (DVR)	1.88%
Hindustan Unilever	1.76%
Oil & Natural Gas Corporation Ltd.	1.69%
Hero MotoCorp Ltd.	1.58%
Power Finance Corporation Ltd.	1.57%
Asian Paints Ltd.	1.55%
Castrol India Ltd.	1.51%
Coal India Ltd.	1.40%
Lakshmi Vilas Bank Ltd.	1.28%
Aurobindo Pharma Ltd.	1.27%
Tech Mahindra Ltd.	1.25%
Other	28.35%

**SECTORAL ALLOCATION**

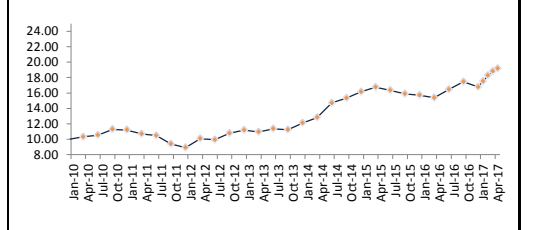


**BENCHMARK COMPARISON (CAGR RETURN)**



Benchmark : CNX Nifty

**FUND - NAV**



**ABOUT THE FUND**

**OBJECTIVE**  
To generate capital appreciation & provide long term growth opportunities by investing in a portfolio predominantly of equity & equity related instruments generally in S & P CNX Nifty stocks and to generate consistent returns by investing in debt & money market instruments. The risk profile of the fund is high.

**Fund Manager Details**

Fund Manager	No. Of Funds Managed		
	Equity	Debt	Hybrid
Niraj Kumar	4	3	7
Biswarup Mohapatra	4	-	7

**ASSET ALLOCATION**

Composition	Min.	Max.	Actual
Fixed Interest Investments	0.00%	15.00%	0.00%
Cash and Money Market	0.00%	20.00%	4.34%
Equity	80.00%	100.00%	95.66%

**RISK RETURN PROFILE**

Risk	High
Return	High

**DATE OF INCEPTION**

9th September 2010

**FUND PERFORMANCE as on 30th Apr 2017**

Returns since Publication of NAV	
Absolute Return	59.27%
Simple Annual Return	8.94%
CAGR Return	7.28%

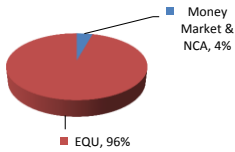
**NAV as on 28th Apr 2017**

15.92703

**AUM as on 30th Apr 2017 (Rs. In Lakhs)**

11,223.83

**ASSET ALLOCATION**



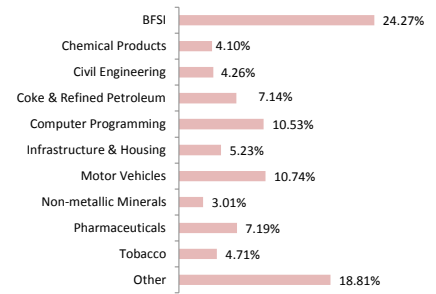
**PORTFOLIO AS ON 30th Apr 2017**

<b>SECURITIES</b>	<b>HOLDINGS</b>
<b>MONEY MARKET INSTRUMENTS &amp; NCA</b>	<b>4.34%</b>

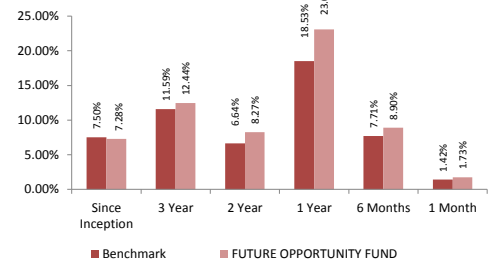
<b>SECURITIES</b>	<b>HOLDINGS</b>
<b>EQUITY</b>	<b>95.66%</b>

Infosys Technologies Ltd.	5.83%
HDFC Bank Ltd.	5.38%
ITC Ltd.	4.71%
Larsen & Toubro Ltd.	4.26%
ICICI Bank Ltd.	4.25%
HDFC Ltd.	3.81%
Reliance Industries Ltd.	3.62%
TATA Motors Ltd.	3.13%
Sun Pharmaceuticals Industries Ltd.	3.12%
State Bank of India	2.88%
Axis Bank Ltd.	2.80%
TATA Consultancy Services Ltd.	2.78%
Mahindra and Mahindra Ltd.	2.35%
Maruti Suzuki India Ltd.	2.35%
TATA Motors Ltd. (DVR)	1.93%
Hindustan Unilever	1.92%
Oil & Natural Gas Corporation Ltd.	1.85%
Asian Paints Ltd.	1.77%
Hero MotoCorp Ltd.	1.58%
Coal India Ltd.	1.51%
Power Finance Corporation Ltd.	1.50%
Castrol India Ltd.	1.50%
Lupin Ltd.	1.47%
Bajaj Auto Ltd.	1.33%
Aurobindo Pharma Ltd.	1.30%
Other	26.74%

**SECTORAL ALLOCATION**

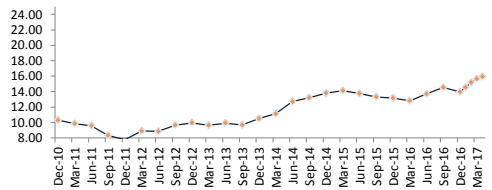


**BENCHMARK COMPARISON (CAGR RETURN)**



Benchmark : CNX Nifty

**FUND - NAV**



**ABOUT THE FUND**

**OBJECTIVE**  
To maximise participation in an actively managed, well diversified equity portfolio of fundamentally strong blue-chip companies while using debt instruments to safeguard the interest of the policyholder.

**STRATEGY**  
Investment in equities and debt instruments.

**Fund Manager Details**

Fund Manager	No. Of Funds Managed		
	Equity	Debt	Hybrid
Niraj Kumar	4	3	7
Biswarup Mohapatra	4	-	7

**ASSET ALLOCATION**

Composition	Min.	Max.	Actual
Money Market Instruments, Government Bonds and Corporate Bonds	0.00%	100.00%	5.10%
Equity	0.00%	100.00%	94.90%

**RISK RETURN PROFILE**

Risk	High
Return	High

**DATE OF INCEPTION**

12th October 2009

**FUND PERFORMANCE as on 30th Apr 2017**

Returns since Publication of NAV	
Absolute Return	80.99%
Simple Annual Return	10.83%
CAGR Return	8.25%

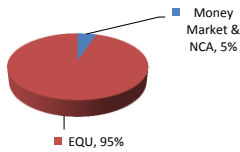
**NAV as on 28th Apr 2017**

18.09866

**AUM as on 30th Apr 2017 (Rs. In Lakhs)**

2,239.57

**ASSET ALLOCATION**



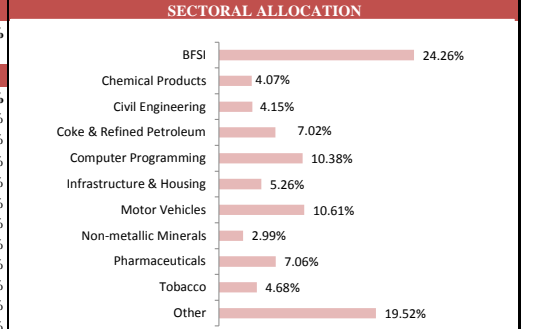
**PORTFOLIO AS ON 30th Apr 2017**

**SECURITIES**  
**MONEY MARKET INSTRUMENTS & NCA** **5.10%**

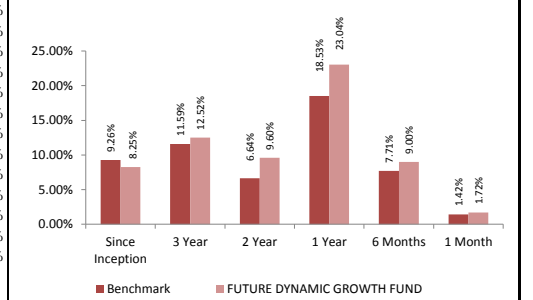
**SECURITIES** **HOLDINGS**

SECURITIES	HOLDINGS
<b>EQUITY</b>	<b>94.90%</b>
Infosys Technologies Ltd.	5.72%
HDFC Bank Ltd.	5.38%
ITC Ltd.	4.68%
ICICI Bank Ltd.	4.27%
Larsen & Toubro Ltd.	4.15%
HDFC Ltd.	3.82%
Reliance Industries Ltd.	3.61%
TATA Motors Ltd.	3.08%
Sun Pharmaceuticals Industries Ltd.	3.06%
State Bank of India	2.84%
Axis Bank Ltd.	2.83%
TATA Consultancy Services Ltd.	2.75%
Maruti Suzuki India Ltd.	2.37%
Mahindra and Mahindra Ltd.	2.35%
Hindustan Unilever	1.90%
Oil & Natural Gas Corporation Ltd.	1.84%
TATA Motors Ltd. (DVR)	1.81%
Asian Paints Ltd.	1.73%
Hero MotoCorp Ltd.	1.58%
Power Finance Corporation Ltd.	1.54%
Coal India Ltd.	1.49%
Lupin Ltd.	1.44%
Castrol India Ltd.	1.38%
Bajaj Auto Ltd.	1.30%
Lakshmi Vilas Bank Ltd.	1.28%
Other	26.69%

**SECTORAL ALLOCATION**

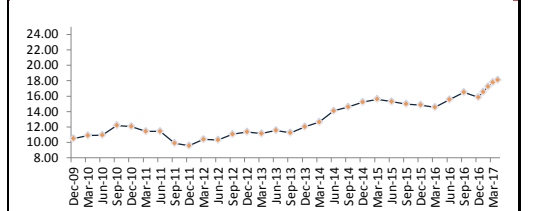


**BENCHMARK COMPARISON (CAGR RETURN)**



Benchmark : CNX Nifty

**FUND - NAV**



**ABOUT THE FUND**

**OBJECTIVE**  
To provide potentially high returns to unit holders by investing primarily in equities to target growth in capital value of assets. The fund will also be invested to a certain extent in govt. securities, corporate bonds and money market instruments.

**STRATEGY**  
Investment in a spread of equities. Diversification by sector, industry and risk.

**Fund Manager Details**

Fund Manager	No. Of Funds Managed		
	Equity	Debt	Hybrid
Niraj Kumar	4	3	7
Biswarup Mohapatra	4	-	7
Pankaj	-	3	7

**ASSET ALLOCATION**

Composition	Min.	Max.	Actual
Fixed Interest Investments	10.00%	50.00%	17.42%
Money Market and Cash	0.00%	40.00%	1.85%
Equity	50.00%	90.00%	80.73%

**RISK RETURN PROFILE**

Risk	High
Return	High

**RATING**

The rating of all the Corporate Debt in our portfolio is rated as AA or higher.

**DATE OF INCEPTION**

18th July 2008

**FUND PERFORMANCE as on 30th Apr 2017**

Returns since Publication of NAV	
Absolute Return	120.62%
Simple Annual Return	13.85%
CAGR Return	9.51%

**NAV as on 28th Apr 2017**

22.06175

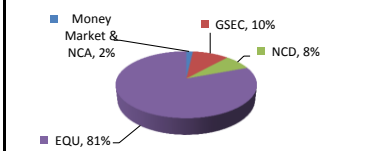
**AUM as on 30th Apr 2017 (Rs. In Lakhs)**

8,878.85

**Modified Duration (In Years)**

6.03

**ASSET ALLOCATION**



**PORTFOLIO AS ON 30th Apr 2017**

**SECURITIES HOLDINGS**

**MONEY MARKET INSTRUMENTS & NCA 1.85%**

**SECURITIES HOLDINGS**

**GOVERNMENT SECURITIES 9.90%**

8.38% Tamil Nadu SDL 27/01/2026	4.82%
7.61% Tamil Nadu SDL 15/02/2027	1.43%
8.67% Karnataka SDL 24/02/2026	1.22%
8.97% Central Government 05/12/2030	1.00%
8.17% Central Government 01/12/2044	0.60%
7.77% Kerala SDL 01/03/2027	0.57%
Other	0.27%

**SECURITIES HOLDINGS**

**CORPORATE DEBT 7.52%**

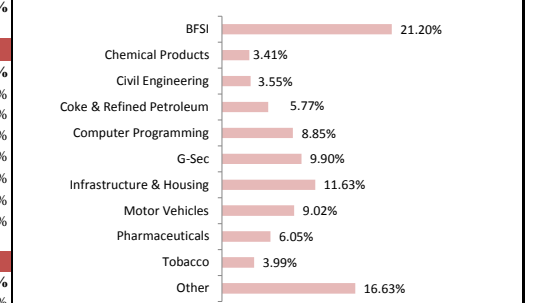
10.63% IOT Utikal Energy Services Ltd. 20/09/2028	3.42%
7.9% Reliance Ports & Terminals Ltd. 18/11/2026	1.93%
10.25% Reliance Gas Trans Infra Ltd. 22/08/2021	0.99%
7.90% Inland Waterways Authority of India 03/03/2027	0.58%
Other	0.60%

**SECURITIES HOLDINGS**

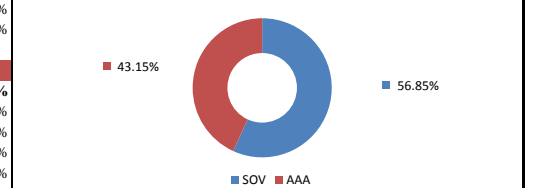
**EQUITY 80.73%**

Infosys Technologies Ltd.	4.88%
HDFC Bank Ltd.	4.65%
ITC Ltd.	3.99%
ICICI Bank Ltd.	3.74%
Larsen & Toubro Ltd.	3.55%
HDFC Ltd.	3.28%
Reliance Industries Ltd.	2.98%
Sun Pharmaceuticals Industries Ltd.	2.68%
TATA Motors Ltd.	2.64%
Axis Bank Ltd.	2.48%
State Bank of India	2.42%
TATA Consultancy Services Ltd.	2.34%
Mahindra and Mahindra Ltd.	2.00%
Maruti Suzuki India Ltd.	1.99%
Hindustan Unilever	1.59%
TATA Motors Ltd. (DVR)	1.54%
Oil & Natural Gas Corporation Ltd.	1.52%
Asian Paints Ltd.	1.45%
Hero MotoCorp Ltd.	1.35%
Power Finance Corporation Ltd.	1.33%
Coal India Ltd.	1.24%
Lupin Ltd.	1.19%
Aurobindo Pharma Ltd.	1.11%
Lakshmi Vilas Bank Ltd.	1.11%
Bajaj Auto Ltd.	1.10%
Other	22.58%

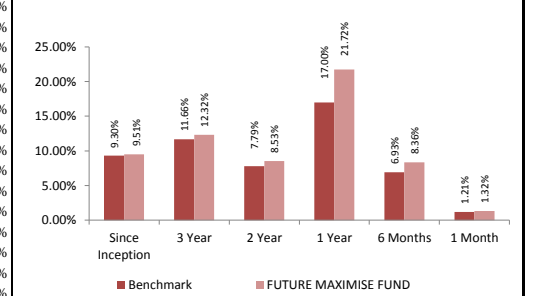
**SECTORAL ALLOCATION**



**Debt Rating Profile**

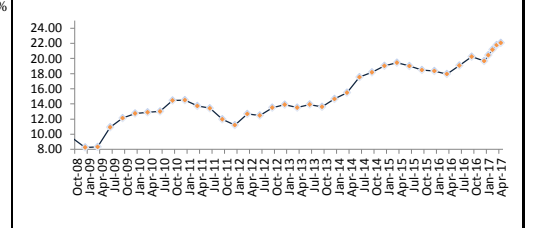


**BENCHMARK COMPARISON (CAGR RETURN)**



Benchmark : CNX Nifty + CRISIL Composite Bond Index + CRISIL Liquid Fund Index

**FUND - NAV**



**ABOUT THE FUND**

**OBJECTIVE**  
To provide a balanced return from investing in both fixed interest securities as well as in equities so as to balance stability of return through the former and growth in capital value through the latter. The fund will also invest in money market instruments to provide liquidity.

**STRATEGY**

Balances high return and high risk from equity investments by the stability provided by fixed interest instruments.

**Fund Manager Details**

Fund Manager	No. Of Funds Managed		
	Equity	Debt	Hybrid
Niraj Kumar	4	3	7
Biswarup Mohapatra	4	-	7
Pankaj	-	3	7

**ASSET ALLOCATION**

Composition	Min.	Max.	Actual
Fixed Interest Investments	40.00%	70.00%	45.65%
Money Market and Cash	0.00%	30.00%	3.04%
Equity	30.00%	60.00%	51.31%

**RISK RETURN PROFILE**

Risk	Moderate
Return	High

**RATING**

The rating of all the Corporate Debt in our portfolio is rated as AA or higher.

**DATE OF INCEPTION**

18th July 2008

**FUND PERFORMANCE as on 30th Apr 2017**

Returns since Publication of NAV	
Absolute Return	96.93%
Simple Annual Return	11.13%
CAGR Return	8.09%

**NAV as on 28th Apr 2017**

19.69328

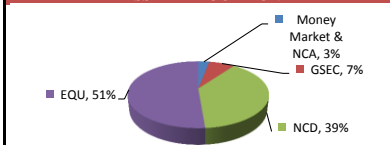
**AUM as on 30th Apr 2017 (Rs. In Lakhs)**

9,010.68

**Modified Duration (In Years)**

5.19

**ASSET ALLOCATION**



**PORTFOLIO AS ON 30th Apr 2017**

**SECURITIES HOLDINGS**

**MONEY MARKET INSTRUMENTS & NCA 3.04%**

**SECURITIES HOLDINGS**

**GOVERNMENT SECURITIES 7.03%**

8.83% Central Government 12/12/2041	1.88%
8.17% Central Government 01/12/2044	1.78%
7.61% Tamil Nadu SDL 15/02/2027	1.41%
7.5% Central Government 10/08/2034	1.11%
7.77% Kerala SDL 01/03/2027	0.56%
Other	0.29%

**SECURITIES HOLDINGS**

**CORPORATE DEBT 38.62%**

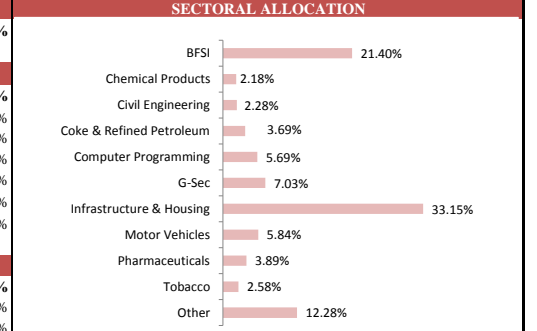
10.25% Reliance Gas Trans Infra Ltd. 22/08/2021	7.19%
10.63% IOT Utikal Energy Services Ltd. 20/09/2028	6.23%
9.98% IL&FS Financial Services Ltd. 05/12/2021	4.25%
9.7% LNT Infra Debt Funds Ltd. 10/06/2024	3.38%
7.9% HDFC Ltd. 24/08/2026	3.36%
8.43% LIC Housing Finance Ltd. 10/07/2026	2.31%
7.9% Reliance Ports & Terminals Ltd. 18/11/2026	1.91%
9.7% India Infradebt Ltd. 28/05/2024	1.23%
7.90% Inland Waterways Authority of India 03/03/2027	0.57%
10.75% Reliance Capital Ltd. 12/08/2021	6.12%
10.25% Reliance Capital Ltd. 31/10/2022	1.71%
Other	0.35%

**SECURITIES HOLDINGS**

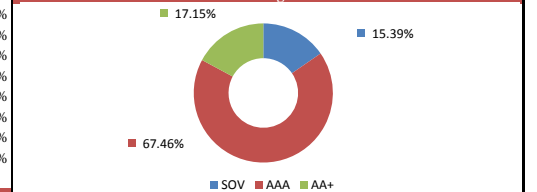
**EQUITY 51.31%**

Infosys Technologies Ltd.	3.12%
HDFC Bank Ltd.	2.99%
ITC Ltd.	2.58%
ICICI Bank Ltd.	2.37%
Larsen & Toubro Ltd.	2.28%
HDFC Ltd.	2.15%
Reliance Industries Ltd.	1.97%
Sun Pharmaceuticals Industries Ltd.	1.69%
TATA Motors Ltd.	1.69%
Axis Bank Ltd.	1.59%
State Bank of India	1.56%
TATA Consultancy Services Ltd.	1.53%
Maruti Suzuki India Ltd.	1.29%
Mahindra and Mahindra Ltd.	1.29%
TATA Motors Ltd. (DVR)	1.01%
Hindustan Unilever	1.00%
Oil & Natural Gas Corporation Ltd.	1.00%
Asian Paints Ltd.	0.84%
Hero MotoCorp Ltd.	0.84%
Coal India Ltd.	0.82%
Lupin Ltd.	0.79%
Power Finance Corporation Ltd.	0.77%
Bajaj Auto Ltd.	0.72%
Lakshmi Vilas Bank Ltd.	0.72%
Aurobindo Pharma Ltd.	0.69%
Other	13.89%

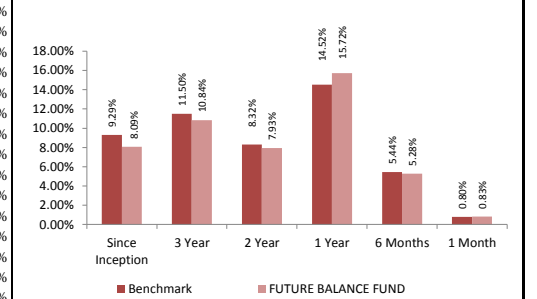
**SECTORAL ALLOCATION**



**Debt Rating Profile**

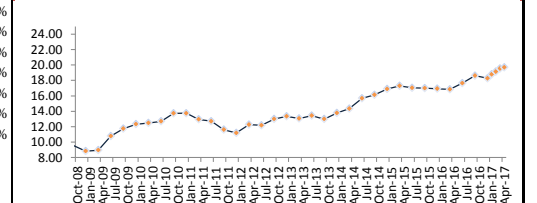


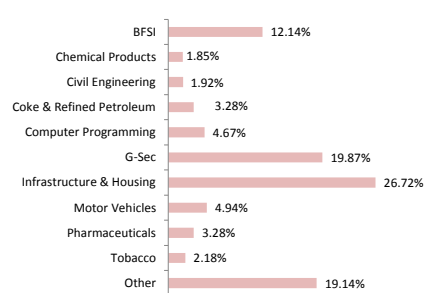
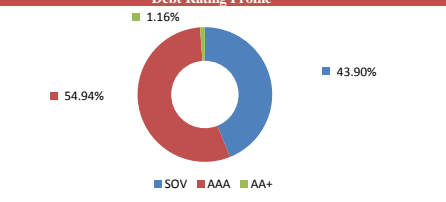
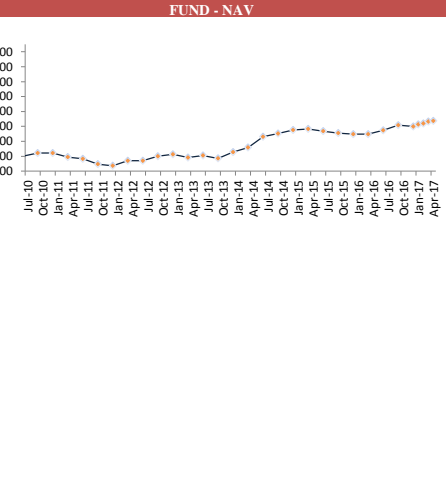
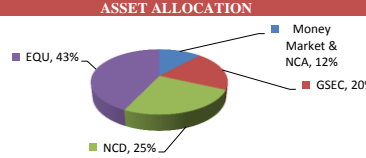
**BENCHMARK COMPARISON (CAGR RETURN)**



Benchmark : Nifty + CRISIL Composite Bond Index + CRISIL Liquid Fund Index

**FUND - NAV**



ABOUT THE FUND		PORTFOLIO AS ON 30th Apr 2017		SECTORAL ALLOCATION																																																																															
<b>OBJECTIVE</b> To provide capital protection and optimum returns based on model involving systematic asset allocation and dynamic rebalancing.		<b>SECURITIES HOLDINGS</b> <b>MONEY MARKET INSTRUMENTS &amp; NCA</b> <b>11.86%</b>		 <table border="1"> <tr><td>BFSI</td><td>12.14%</td></tr> <tr><td>Chemical Products</td><td>1.85%</td></tr> <tr><td>Civil Engineering</td><td>1.92%</td></tr> <tr><td>Coke &amp; Refined Petroleum</td><td>3.28%</td></tr> <tr><td>Computer Programming</td><td>4.67%</td></tr> <tr><td>G-Sec</td><td>19.87%</td></tr> <tr><td>Infrastructure &amp; Housing</td><td>26.72%</td></tr> <tr><td>Motor Vehicles</td><td>4.94%</td></tr> <tr><td>Pharmaceuticals</td><td>3.28%</td></tr> <tr><td>Tobacco</td><td>2.18%</td></tr> <tr><td>Other</td><td>19.14%</td></tr> </table>		BFSI	12.14%	Chemical Products	1.85%	Civil Engineering	1.92%	Coke & Refined Petroleum	3.28%	Computer Programming	4.67%	G-Sec	19.87%	Infrastructure & Housing	26.72%	Motor Vehicles	4.94%	Pharmaceuticals	3.28%	Tobacco	2.18%	Other	19.14%																																																								
BFSI	12.14%																																																																																		
Chemical Products	1.85%																																																																																		
Civil Engineering	1.92%																																																																																		
Coke & Refined Petroleum	3.28%																																																																																		
Computer Programming	4.67%																																																																																		
G-Sec	19.87%																																																																																		
Infrastructure & Housing	26.72%																																																																																		
Motor Vehicles	4.94%																																																																																		
Pharmaceuticals	3.28%																																																																																		
Tobacco	2.18%																																																																																		
Other	19.14%																																																																																		
<b>Fund Manager Details</b>		<b>SECURITIES HOLDINGS</b> <b>GOVERNMENT SECURITIES</b> <b>19.87%</b>		<b>Debt Rating Profile</b>																																																																															
<table border="1"> <tr> <th rowspan="2">Fund Manager</th> <th colspan="3">No. Of Funds Managed</th> </tr> <tr> <th>Equity</th> <th>Debt</th> <th>Hybrid</th> </tr> <tr> <td>Niraj Kumar</td> <td>4</td> <td>3</td> <td>7</td> </tr> <tr> <td>Biswarup Mohapatra</td> <td>4</td> <td>-</td> <td>7</td> </tr> <tr> <td>Pankaj</td> <td>-</td> <td>3</td> <td>7</td> </tr> </table>		Fund Manager	No. Of Funds Managed			Equity	Debt	Hybrid	Niraj Kumar	4	3	7	Biswarup Mohapatra	4	-	7	Pankaj	-	3	7	<table border="1"> <tr><td>8.87% Tamil Nadu SDL 16/10/2024</td><td>5.14%</td></tr> <tr><td>8.08% West Bengal SDL 25/02/2025</td><td>3.95%</td></tr> <tr><td>8.15% Gujarat SDL 23/09/2025</td><td>3.49%</td></tr> <tr><td>9.4% Madhya Pradesh SDL 30/01/2024</td><td>2.64%</td></tr> <tr><td>8.94% Gujarat SDL 24/09/2024</td><td>2.58%</td></tr> <tr><td>8.98% West Bengal SDL 23/07/2024</td><td>2.07%</td></tr> </table>		8.87% Tamil Nadu SDL 16/10/2024	5.14%	8.08% West Bengal SDL 25/02/2025	3.95%	8.15% Gujarat SDL 23/09/2025	3.49%	9.4% Madhya Pradesh SDL 30/01/2024	2.64%	8.94% Gujarat SDL 24/09/2024	2.58%	8.98% West Bengal SDL 23/07/2024	2.07%	 <table border="1"> <tr><td>SOV</td><td>54.94%</td></tr> <tr><td>AAA</td><td>43.90%</td></tr> <tr><td>AA+</td><td>1.16%</td></tr> </table> <p>No comparable benchmark available for the fund</p>		SOV	54.94%	AAA	43.90%	AA+	1.16%																																									
Fund Manager	No. Of Funds Managed																																																																																		
	Equity	Debt	Hybrid																																																																																
Niraj Kumar	4	3	7																																																																																
Biswarup Mohapatra	4	-	7																																																																																
Pankaj	-	3	7																																																																																
8.87% Tamil Nadu SDL 16/10/2024	5.14%																																																																																		
8.08% West Bengal SDL 25/02/2025	3.95%																																																																																		
8.15% Gujarat SDL 23/09/2025	3.49%																																																																																		
9.4% Madhya Pradesh SDL 30/01/2024	2.64%																																																																																		
8.94% Gujarat SDL 24/09/2024	2.58%																																																																																		
8.98% West Bengal SDL 23/07/2024	2.07%																																																																																		
SOV	54.94%																																																																																		
AAA	43.90%																																																																																		
AA+	1.16%																																																																																		
<b>ASSET ALLOCATION</b>		<b>SECURITIES HOLDINGS</b> <b>CORPORATE DEBT</b> <b>25.39%</b>		<b>FUND - NAV</b>																																																																															
<table border="1"> <tr> <th>Composition</th> <th>Min.</th> <th>Max.</th> <th>Actual</th> </tr> <tr> <td>Fixed Income including Money Market Instruments</td> <td>0.00%</td> <td>100.00%</td> <td>57.11%</td> </tr> <tr> <td>Equity</td> <td>0.00%</td> <td>100.00%</td> <td>42.89%</td> </tr> </table>		Composition	Min.	Max.	Actual	Fixed Income including Money Market Instruments	0.00%	100.00%	57.11%	Equity	0.00%	100.00%	42.89%	<table border="1"> <tr><td>8.38% Power Finance Corporation Ltd. 27/04/2020</td><td>8.81%</td></tr> <tr><td>8.7% HDFC Ltd. 18/05/2020</td><td>6.91%</td></tr> <tr><td>8.75% LIC Housing Finance Ltd. 12/02/2021</td><td>4.96%</td></tr> <tr><td>10.25% Reliance Gas Trans Infra Ltd. 22/08/2021</td><td>4.19%</td></tr> <tr><td>10.5% M&amp;M Financial Services Ltd. 13/12/2021</td><td>0.52%</td></tr> </table>		8.38% Power Finance Corporation Ltd. 27/04/2020	8.81%	8.7% HDFC Ltd. 18/05/2020	6.91%	8.75% LIC Housing Finance Ltd. 12/02/2021	4.96%	10.25% Reliance Gas Trans Infra Ltd. 22/08/2021	4.19%	10.5% M&M Financial Services Ltd. 13/12/2021	0.52%	 <table border="1"> <tr><td>Jul-10</td><td>10.00</td></tr> <tr><td>Oct-10</td><td>10.00</td></tr> <tr><td>Jan-11</td><td>10.00</td></tr> <tr><td>Apr-11</td><td>10.00</td></tr> <tr><td>Jul-11</td><td>10.00</td></tr> <tr><td>Oct-11</td><td>10.00</td></tr> <tr><td>Jan-12</td><td>10.00</td></tr> <tr><td>Apr-12</td><td>10.00</td></tr> <tr><td>Jul-12</td><td>10.00</td></tr> <tr><td>Oct-12</td><td>10.00</td></tr> <tr><td>Jan-13</td><td>10.00</td></tr> <tr><td>Apr-13</td><td>10.00</td></tr> <tr><td>Jul-13</td><td>10.00</td></tr> <tr><td>Oct-13</td><td>10.00</td></tr> <tr><td>Jan-14</td><td>10.00</td></tr> <tr><td>Apr-14</td><td>10.00</td></tr> <tr><td>Jul-14</td><td>10.00</td></tr> <tr><td>Oct-14</td><td>10.00</td></tr> <tr><td>Jan-15</td><td>10.00</td></tr> <tr><td>Apr-15</td><td>10.00</td></tr> <tr><td>Jul-15</td><td>10.00</td></tr> <tr><td>Oct-15</td><td>10.00</td></tr> <tr><td>Jan-16</td><td>10.00</td></tr> <tr><td>Apr-16</td><td>10.00</td></tr> <tr><td>Jul-16</td><td>10.00</td></tr> <tr><td>Oct-16</td><td>10.00</td></tr> <tr><td>Jan-17</td><td>10.00</td></tr> <tr><td>Apr-17</td><td>10.00</td></tr> </table>		Jul-10	10.00	Oct-10	10.00	Jan-11	10.00	Apr-11	10.00	Jul-11	10.00	Oct-11	10.00	Jan-12	10.00	Apr-12	10.00	Jul-12	10.00	Oct-12	10.00	Jan-13	10.00	Apr-13	10.00	Jul-13	10.00	Oct-13	10.00	Jan-14	10.00	Apr-14	10.00	Jul-14	10.00	Oct-14	10.00	Jan-15	10.00	Apr-15	10.00	Jul-15	10.00	Oct-15	10.00	Jan-16	10.00	Apr-16	10.00	Jul-16	10.00	Oct-16	10.00	Jan-17	10.00	Apr-17	10.00
Composition	Min.	Max.	Actual																																																																																
Fixed Income including Money Market Instruments	0.00%	100.00%	57.11%																																																																																
Equity	0.00%	100.00%	42.89%																																																																																
8.38% Power Finance Corporation Ltd. 27/04/2020	8.81%																																																																																		
8.7% HDFC Ltd. 18/05/2020	6.91%																																																																																		
8.75% LIC Housing Finance Ltd. 12/02/2021	4.96%																																																																																		
10.25% Reliance Gas Trans Infra Ltd. 22/08/2021	4.19%																																																																																		
10.5% M&M Financial Services Ltd. 13/12/2021	0.52%																																																																																		
Jul-10	10.00																																																																																		
Oct-10	10.00																																																																																		
Jan-11	10.00																																																																																		
Apr-11	10.00																																																																																		
Jul-11	10.00																																																																																		
Oct-11	10.00																																																																																		
Jan-12	10.00																																																																																		
Apr-12	10.00																																																																																		
Jul-12	10.00																																																																																		
Oct-12	10.00																																																																																		
Jan-13	10.00																																																																																		
Apr-13	10.00																																																																																		
Jul-13	10.00																																																																																		
Oct-13	10.00																																																																																		
Jan-14	10.00																																																																																		
Apr-14	10.00																																																																																		
Jul-14	10.00																																																																																		
Oct-14	10.00																																																																																		
Jan-15	10.00																																																																																		
Apr-15	10.00																																																																																		
Jul-15	10.00																																																																																		
Oct-15	10.00																																																																																		
Jan-16	10.00																																																																																		
Apr-16	10.00																																																																																		
Jul-16	10.00																																																																																		
Oct-16	10.00																																																																																		
Jan-17	10.00																																																																																		
Apr-17	10.00																																																																																		
<b>RISK RETURN PROFILE</b>		<b>SECURITIES HOLDINGS</b> <b>EQUITY</b> <b>42.89%</b>																																																																																	
<table border="1"> <tr><td>Risk</td><td>Low to medium</td></tr> <tr><td>Return</td><td>Low to medium</td></tr> </table>		Risk	Low to medium	Return	Low to medium	<table border="1"> <tr><td>Infosys Technologies Ltd.</td><td>2.66%</td></tr> <tr><td>HDFC Bank Ltd.</td><td>2.53%</td></tr> <tr><td>ITC Ltd.</td><td>2.18%</td></tr> <tr><td>ICICI Bank Ltd.</td><td>2.05%</td></tr> <tr><td>Larsen &amp; Toubro Ltd.</td><td>1.92%</td></tr> <tr><td>HDFC Ltd.</td><td>1.80%</td></tr> <tr><td>Reliance Industries Ltd.</td><td>1.69%</td></tr> <tr><td>TATA Motors Ltd.</td><td>1.41%</td></tr> <tr><td>Sun Pharmaceuticals Industries Ltd.</td><td>1.40%</td></tr> <tr><td>Axis Bank Ltd.</td><td>1.36%</td></tr> <tr><td>State Bank of India</td><td>1.35%</td></tr> <tr><td>TATA Consultancy Services Ltd.</td><td>1.17%</td></tr> <tr><td>Maruti Suzuki India Ltd.</td><td>1.10%</td></tr> <tr><td>Mahindra and Mahindra Ltd.</td><td>1.09%</td></tr> <tr><td>TATA Motors Ltd. (DVR)</td><td>0.89%</td></tr> <tr><td>Hindustan Unilever</td><td>0.86%</td></tr> <tr><td>Asian Paints Ltd.</td><td>0.82%</td></tr> <tr><td>Oil &amp; Natural Gas Corporation Ltd.</td><td>0.79%</td></tr> <tr><td>Hero MotoCorp Ltd.</td><td>0.70%</td></tr> <tr><td>Coal India Ltd.</td><td>0.67%</td></tr> <tr><td>Lupin Ltd.</td><td>0.66%</td></tr> <tr><td>Castrol India Ltd.</td><td>0.66%</td></tr> <tr><td>Lakshmi Vilas Bank Ltd.</td><td>0.60%</td></tr> <tr><td>Aurobindo Pharma Ltd.</td><td>0.58%</td></tr> <tr><td>Ambuja Cements Ltd.</td><td>0.56%</td></tr> <tr><td>Other</td><td>11.40%</td></tr> </table>		Infosys Technologies Ltd.	2.66%	HDFC Bank Ltd.	2.53%	ITC Ltd.	2.18%	ICICI Bank Ltd.	2.05%	Larsen & Toubro Ltd.	1.92%	HDFC Ltd.	1.80%	Reliance Industries Ltd.	1.69%	TATA Motors Ltd.	1.41%	Sun Pharmaceuticals Industries Ltd.	1.40%	Axis Bank Ltd.	1.36%	State Bank of India	1.35%	TATA Consultancy Services Ltd.	1.17%	Maruti Suzuki India Ltd.	1.10%	Mahindra and Mahindra Ltd.	1.09%	TATA Motors Ltd. (DVR)	0.89%	Hindustan Unilever	0.86%	Asian Paints Ltd.	0.82%	Oil & Natural Gas Corporation Ltd.	0.79%	Hero MotoCorp Ltd.	0.70%	Coal India Ltd.	0.67%	Lupin Ltd.	0.66%	Castrol India Ltd.	0.66%	Lakshmi Vilas Bank Ltd.	0.60%	Aurobindo Pharma Ltd.	0.58%	Ambuja Cements Ltd.	0.56%	Other	11.40%																								
Risk	Low to medium																																																																																		
Return	Low to medium																																																																																		
Infosys Technologies Ltd.	2.66%																																																																																		
HDFC Bank Ltd.	2.53%																																																																																		
ITC Ltd.	2.18%																																																																																		
ICICI Bank Ltd.	2.05%																																																																																		
Larsen & Toubro Ltd.	1.92%																																																																																		
HDFC Ltd.	1.80%																																																																																		
Reliance Industries Ltd.	1.69%																																																																																		
TATA Motors Ltd.	1.41%																																																																																		
Sun Pharmaceuticals Industries Ltd.	1.40%																																																																																		
Axis Bank Ltd.	1.36%																																																																																		
State Bank of India	1.35%																																																																																		
TATA Consultancy Services Ltd.	1.17%																																																																																		
Maruti Suzuki India Ltd.	1.10%																																																																																		
Mahindra and Mahindra Ltd.	1.09%																																																																																		
TATA Motors Ltd. (DVR)	0.89%																																																																																		
Hindustan Unilever	0.86%																																																																																		
Asian Paints Ltd.	0.82%																																																																																		
Oil & Natural Gas Corporation Ltd.	0.79%																																																																																		
Hero MotoCorp Ltd.	0.70%																																																																																		
Coal India Ltd.	0.67%																																																																																		
Lupin Ltd.	0.66%																																																																																		
Castrol India Ltd.	0.66%																																																																																		
Lakshmi Vilas Bank Ltd.	0.60%																																																																																		
Aurobindo Pharma Ltd.	0.58%																																																																																		
Ambuja Cements Ltd.	0.56%																																																																																		
Other	11.40%																																																																																		
<b>RATING</b> The rating of all the Corporate Debt in our portfolio is rated as AA or higher.																																																																																			
<b>DATE OF INCEPTION</b> 18th May 2010																																																																																			
<b>FUND PERFORMANCE as on 30th Apr 2017</b>																																																																																			
Returns since Publication of NAV																																																																																			
Absolute Return		47.43%																																																																																	
Simple Annual Return		6.86%																																																																																	
CAGR Return		5.77%																																																																																	
<b>HIGHEST NAV GUARANTEED</b> 14.76977																																																																																			
<b>NAV as on 28th Apr 2017</b> 14.74333																																																																																			
<b>AUM as on 30th Apr 2017 (Rs. In Lakhs)</b> 2,099.96																																																																																			
<b>Modified Duration (In Years)</b> 3.98																																																																																			
<b>ASSET ALLOCATION</b>																																																																																			
 <table border="1"> <tr><td>EQU</td><td>43%</td></tr> <tr><td>Money Market &amp; NCA</td><td>12%</td></tr> <tr><td>GSEC</td><td>20%</td></tr> <tr><td>NCD</td><td>25%</td></tr> </table>		EQU	43%	Money Market & NCA	12%	GSEC	20%	NCD	25%																																																																										
EQU	43%																																																																																		
Money Market & NCA	12%																																																																																		
GSEC	20%																																																																																		
NCD	25%																																																																																		

**ABOUT THE FUND**

**OBJECTIVE**  
To provide stable returns by investing in assets of relatively low to moderate level of risk. The interest credited will be a major component of the fund's return. The fund will invest primarily in fixed interest securities, such as Govt. securities of medium to long duration and Corporate Bonds and money market instruments for liquidity.

**STRATEGY**

Investments in assets of low or moderate risk.

**Fund Manager Details**

Fund Manager	No. Of Funds Managed		
	Equity	Debt	Hybrid
Niraj Kumar	4	3	7
Pankaj	-	3	7

**ASSET ALLOCATION**

Composition	Min.	Max.	Actual
Fixed Interest Investments	50.00%	100.00%	95.39%
Money Market and Cash	0.00%	50.00%	4.61%
Equity	0.00%	0.00%	0.00%

**RISK RETURN PROFILE**

Risk Low	Low
Return Low	Low

**RATING**

The rating of all the Corporate Debt in our portfolio is rated as AA or higher.

**DATE OF INCEPTION**

18th July 2008

**FUND PERFORMANCE as on 30th Apr 2017**

Returns since Publication of NAV	
Absolute Return	132.61%
Simple Annual Return	15.23%
CAGR Return	10.18%

**NAV as on 28th Apr 2017**

23.26101

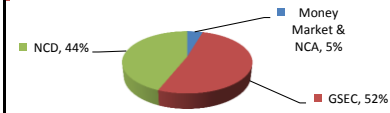
**AUM as on 30th Apr 2017 (Rs. In Lakhs)**

18,968.42

**Modified Duration (In Years)**

6.11

**ASSET ALLOCATION**



**PORTFOLIO AS ON 30th Apr 2017**

**SECURITIES HOLDINGS**

**MONEY MARKET INSTRUMENTS & NCA 4.61%**

**SECURITIES HOLDINGS**

**GOVERNMENT SECURITIES 51.53%**

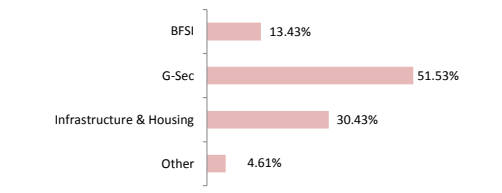
9.23% Central Government 23/12/2043	9.33%
7.92% West Bengal SDL 15/03/2027	5.37%
7.77% Kerala SDL 01/03/2027	3.15%
8.67% Maharashtra SDL 24/02/2026	2.87%
8.20% Gujarat SDL 09/12/2025	2.78%
8.15% Central Government 24/11/2026	2.78%
7.76% Madhya Pradesh SDL 01/03/2027	2.65%
7.4% Central Government 09/09/2035	2.64%
7.29% Kerala SDL 28/12/2026	2.63%
9.71% Haryana SDL 12/03/2024	2.25%
8.67% Karnataka SDL 24/02/2026	2.02%
9.39% Karnataka SDL 23/10/2023	1.95%
9.55% Andhra Pradesh SDL 11/09/2023	1.76%
8.08% West Bengal SDL 25/02/2025	1.64%
9.71% Andhra Pradesh SDL 12/03/2024	1.52%
8.06% Tamil Nadu SDL 15/04/2025	1.33%
8.17% Central Government 01/12/2044	1.18%
9.18% Andhra Pradesh SDL 28/05/2024	1.10%
8.28% Maharashtra SDL 29/07/2025	0.62%
9.48% West Bengal SDL 17/07/2023	0.59%
9.4% Madhya Pradesh SDL 30/01/2024	0.53%
Other	0.84%

**SECURITIES HOLDINGS**

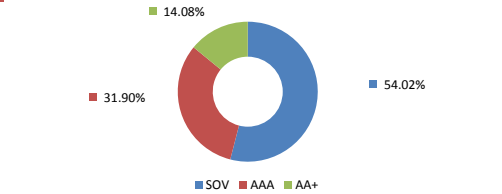
**CORPORATE DEBT 43.86%**

10.25% Reliance Gas Trans Infra Ltd. 22/08/2021	5.33%
7.9% Reliance Ports & Terminals Ltd. 18/11/2026	3.52%
10.63% IOT Utikal Energy Services Ltd. 20/07/2028	3.43%
9% Indiabulls Housing Finance Ltd. 30/06/2026	2.83%
9% Indiabulls Housing Finance Ltd. 19/01/2021	2.77%
10.63% IOT Utikal Energy Services Ltd. 20/09/2028	2.73%
7.95% Reliance Ports & Terminals Ltd. 28/10/2026	2.67%
7.90% Inland Waterways Authority of India 03/03/2027	2.15%
8.43% LIC Housing Finance Ltd. 10/07/2026	1.59%
9.7% LNT Infra Debt Funds Ltd. 10/06/2024	1.32%
7.9% HDFC Ltd. 24/08/2026	1.07%
9.98% IL&FS Financial Services Ltd. 05/12/2021	0.81%
10.25% Reliance Capital Ltd. 31/10/2022	4.88%
9.8% LNT Finance Ltd. 21/12/2022	4.15%
9.37% TATA Capital Financial Services Ltd. 31/03/2025	2.71%
10.5% M&M Financial Services Ltd. 13/12/2021	1.22%
Other	0.69%

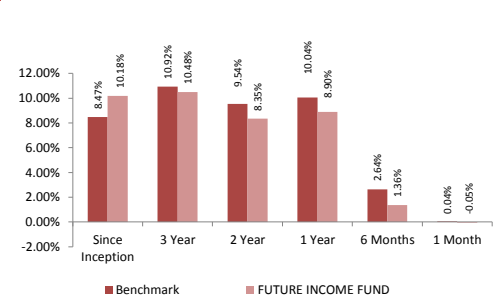
**SECTORAL ALLOCATION**



**Debt Rating Profile**

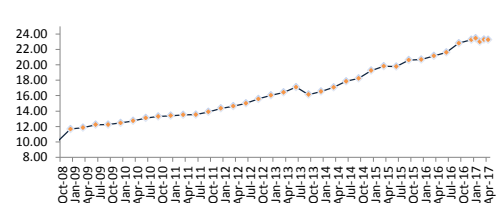


**BENCHMARK COMPARISON (CAGR RETURN)**



**Benchmark : CRISIL Composite Bond Index**

**FUND - NAV**





**ABOUT THE FUND**

**OBJECTIVE**  
To provide stable returns by investing in relatively low risk assets. The Fund will invest exclusively in treasury bills, bank deposits, certificate of deposits, other money instruments and short duration government securities.

**STRATEGY**  
Low risk investment such as money market instruments.

**Fund Manager Details**

Fund Manager	No. Of Funds Managed		
	Equity	Debt	Hybrid
Niraj Kumar	4	3	7
Pankaj	-	3	7

**ASSET ALLOCATION**

Composition	Min.	Max.	Actual
Money Market and Cash	0.00%	75.00%	66.59%
Short Term Debt	20.00%	100.00%	33.41%
Equity	0.00%	0.00%	0.00%

**RISK RETURN PROFILE**

Risk	Low
Return	Low

**DATE OF INCEPTION**

18th July 2008

**FUND PERFORMANCE as on 30th Apr 2017**

Returns since Publication of NAV	
Absolute Return	112.93%
Simple Annual Return	12.97%
CAGR Return	9.07%

**NAV as on 28th Apr 2017**

21.29311

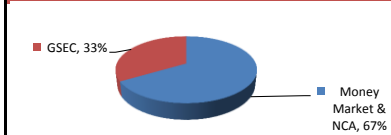
**AUM as on 30th Apr 2017 (Rs. In Lakhs)**

3,281.25

**Modified Duration (In Years)**

1.48

**ASSET ALLOCATION**



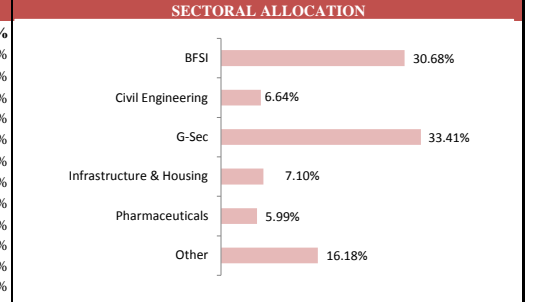
**PORTFOLIO AS ON 30th Apr 2017**

SECURITIES	HOLDINGS
<b>MONEY MARKET INSTRUMENTS &amp; NCA</b>	<b>66.59%</b>
CBLO	9.14%
LARSEN AND TOUBRO Infra Finance Ltd. 27/09/2017	7.10%
Net Current Assets	7.03%
LARSEN AND TOUBRO Ltd. 23/06/2017	6.64%
Axis Bank CD 11/07/2017	6.62%
ICICI Bank CD 18/07/2017	6.01%
Capital First Ltd. 19/07/2017	5.99%
Piramal Enterprises Ltd. 21/07/2017	5.99%
7.75 YES Bank FD 18/07/2017	3.02%
7.75% Indusind Bank FD 11/08/2017	3.02%
7.75% Indusind Bank FD 21/08/2017	3.02%
7.75% YES Bank FD 18/07/2017	3.02%

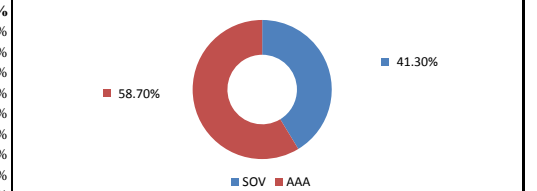
**SECURITIES HOLDINGS**

SECURITIES	HOLDINGS
<b>GOVERNMENT SECURITIES</b>	<b>33.41%</b>
7.77% Kerala SDL 01/03/2027	9.21%
8.3% Maharashtra SDL 25/03/2019	6.26%
8.86% Andhra Pradesh SDL 06/06/2022	4.90%
8.48% Maharashtra SDL 24/02/2020	4.79%
7.85% Gujarat SDL 22/07/2019	1.80%
9.48% West Bengal SDL 17/07/2023	1.69%
7.83% Kerala SDL 24/06/2019	1.15%
8.27% Maharashtra SDL 07/10/2019	1.05%
9.18% Andhra Pradesh SDL 28/05/2024	1.00%
8.48% West Bengal SDL 14/11/2017	0.80%
7.83% Gujarat SDL 24/06/2019	0.76%

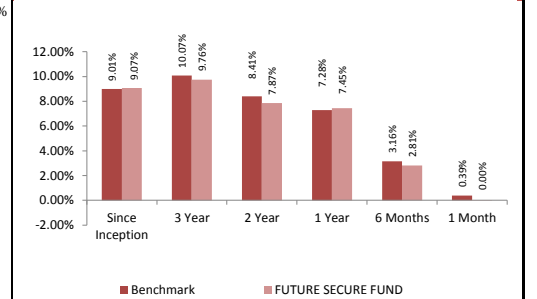
**SECTORAL ALLOCATION**



**Debt Rating Profile**

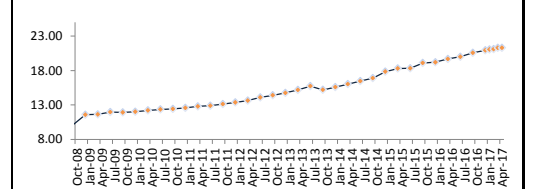


**BENCHMARK COMPARISON (CAGR RETURN)**



**Benchmark: CRISIL Liquid Fund Index + CRISIL TBILL INDEX**

**FUND - NAV**



**ABOUT THE FUND**

**OBJECTIVE**  
Provision of high expected returns with a high probability of negative return.

Fund Manager	No. Of Funds Managed		
	Equity	Debt	Hybrid
Niraj Kumar	4	3	7
Biswarup Mohapatra	4	-	7

**ASSET ALLOCATION**

Composition	Min.	Max.	Actual
Money Market Instruments, Government Bonds and Corporate Bonds	0.00%	40.00%	5.07%
Equity	60.00%	100.00%	94.93%

**RISK RETURN PROFILE**

Risk	Very High
Return	High

**DATE OF INCEPTION**

20th October 2008

**FUND PERFORMANCE as on 30th Apr 2017**

Returns since Publication of NAV	
Absolute Return	212.64%
Simple Annual Return	25.08%
CAGR Return	14.39%

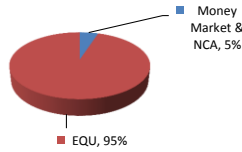
**NAV as on 28th Apr 2017**

31.26374

**AUM as on 30th Apr 2017 (Rs. In Lakhs)**

1,258.95

**ASSET ALLOCATION**



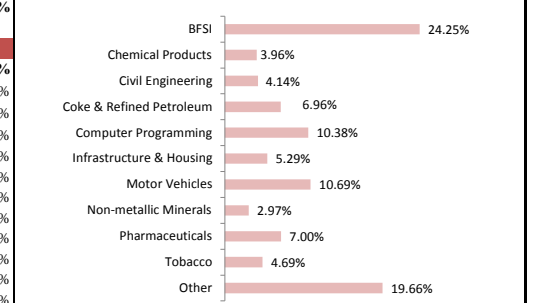
**PORTFOLIO AS ON 30th Apr 2017**

SECURITIES	HOLDINGS
<b>MONEY MARKET INSTRUMENTS &amp; NCA</b>	<b>5.07%</b>

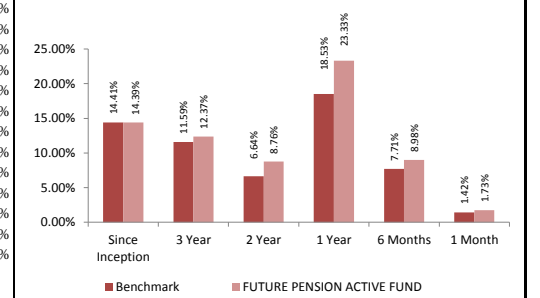
**SECURITIES HOLDINGS**

SECURITIES	HOLDINGS
<b>EQUITY</b>	<b>94.93%</b>
Infosys Technologies Ltd.	5.71%
HDFC Bank Ltd.	5.38%
ITC Ltd.	4.69%
ICICI Bank Ltd.	4.30%
Larsen & Toubro Ltd.	4.14%
HDFC Ltd.	3.82%
Reliance Industries Ltd.	3.57%
TATA Motors Ltd.	3.07%
Sun Pharmaceuticals Industries Ltd.	3.05%
Axis Bank Ltd.	2.82%
State Bank of India	2.80%
TATA Consultancy Services Ltd.	2.76%
Maruti Suzuki India Ltd.	2.37%
Mahindra and Mahindra Ltd.	2.35%
TATA Motors Ltd. (DVR)	1.90%
Hindustan Unilever	1.83%
Oil & Natural Gas Corporation Ltd.	1.82%
Asian Paints Ltd.	1.70%
Hero MotoCorp Ltd.	1.60%
Power Finance Corporation Ltd.	1.53%
Coal India Ltd.	1.51%
Lupin Ltd.	1.41%
Castrol India Ltd.	1.36%
Bajaj Auto Ltd.	1.31%
Lakshmi Vilas Bank Ltd.	1.28%
Other	26.86%

**SECTORAL ALLOCATION**

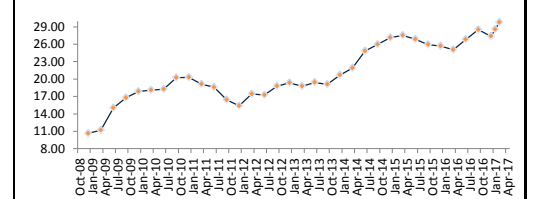


**BENCHMARK COMPARISON (CAGR RETURN)**



Benchmark : CNX Nifty

**FUND - NAV**



**ABOUT THE FUND**

**OBJECTIVE**  
Provision of high expected returns with a moderate probability of negative return.

**Fund Manager Details**

Fund Manager	No. Of Funds Managed		
	Equity	Debt	Hybrid
Niraj Kumar	4	3	7
Biswarup Mohapatra	4	-	7
Pankaj	-	3	7

**ASSET ALLOCATION**

Composition	Min.	Max.	Actual
Money Market Instruments, Government Bonds and Corporate Bonds	30.00%	80.00%	38.05%
Equity	20.00%	70.00%	61.95%

**RISK RETURN PROFILE**

Risk	High
Return	High

**RATING**

The rating of all the Corporate Debt in our portfolio is rated as AA or higher.

**DATE OF INCEPTION**

20th October 2008

**FUND PERFORMANCE as on 30th Apr 2017**

Returns since Publication of NAV

Absolute Return	175.38%
Simple Annual Return	20.69%
CAGR Return	12.69%

**NAV as on 28th Apr 2017**

27.53831

**AUM as on 30th Apr 2017 (Rs. In Lakhs)**

363.39

**Modified Duration (In Years)**

5.56

**ASSET ALLOCATION**



**PORTFOLIO AS ON 30th Apr 2017**

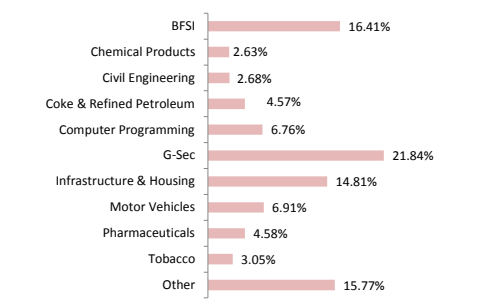
**SECURITIES**  
**MONEY MARKET INSTRUMENTS & NCA** **4.51%**

**SECURITIES**  
**GOVERNMENT SECURITIES** **21.84%**  
8.38% Tamil Nadu SDL 27/01/2026 14.73%  
8.51% Maharashtra SDL 09/03/2026 4.25%  
7.92% West Bengal SDL 15/03/2027 2.85%

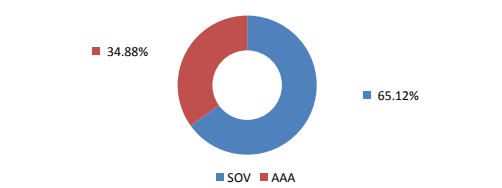
**SECURITIES**  
**CORPORATE DEBT** **11.70%**  
10.25% Reliance Gas Trans Infra Ltd. 22/08/2021 6.05%  
10.63% IOT Utikal Energy Services Ltd. 20/09/2028 5.65%

**SECURITIES**  
**EQUITY** **61.95%**  
Infosys Technologies Ltd. 3.71%  
HDFC Bank Ltd. 3.70%  
ITC Ltd. 3.05%  
ICICI Bank Ltd. 2.82%  
Larsen & Toubro Ltd. 2.68%  
HDFC Ltd. 2.55%  
Reliance Industries Ltd. 2.37%  
TATA Motors Ltd. 2.00%  
Sun Pharmaceuticals Industries Ltd. 1.99%  
State Bank of India 1.87%  
Axis Bank Ltd. 1.87%  
TATA Consultancy Services Ltd. 1.80%  
Maruti Suzuki India Ltd. 1.54%  
Mahindra and Mahindra Ltd. 1.53%  
Hindustan Unilever 1.24%  
TATA Motors Ltd. (DVR) 1.19%  
Oil & Natural Gas Corporation Ltd. 1.17%  
Asian Paints Ltd. 1.11%  
Hero MotoCorp Ltd. 1.02%  
Power Finance Corporation Ltd. 0.99%  
Coal India Ltd. 0.98%  
Lupin Ltd. 0.92%  
Castrol India Ltd. 0.88%  
Bajaj Auto Ltd. 0.86%  
Lakshmi Vilas Bank Ltd. 0.84%  
Other 17.28%

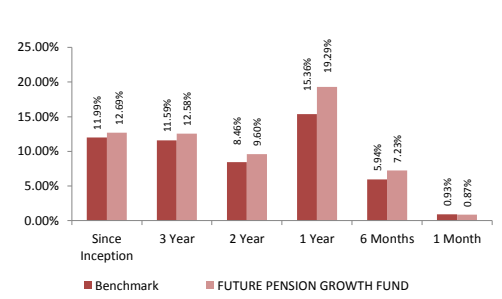
**SECTORAL ALLOCATION**



**Debt Rating Profile**

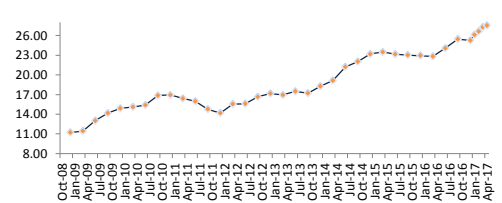


**BENCHMARK COMPARISON (CAGR RETURN)**



Benchmark : Nifty + CRISIL Composite Bond Index + CRISIL Liquid Fund Index

**FUND - NAV**



**ABOUT THE FUND**

**OBJECTIVE**  
Preservation of nominal value of contributions along with a low exposure to high expected return, with a low probability of negative return.

**Fund Manager Details**

Fund Manager	No. Of Funds Managed		
	Equity	Debt	Hybrid
Niraj Kumar	4	3	7
Biswarup Mohapatra	4	-	7
Pankaj	-	3	7

**ASSET ALLOCATION**

Composition	Min.	Max.	Actual
Money Market Instruments, Government Bonds and Corporate Bonds	80.00%	100.00%	84.78%
Equity	0.00%	20.00%	15.22%

**RISK RETURN PROFILE**

Risk	Medium
Return	Medium

**RATING**

The rating of all the Corporate Debt in our portfolio is rated as AA or higher.

**DATE OF INCEPTION**

17th October 2008

**FUND PERFORMANCE as on 30th Apr 2017**

Returns since Publication of NAV	
Absolute Return	141.24%
Simple Annual Return	16.66%
CAGR Return	10.95%

**NAV as on 28th Apr 2017**

24.12369

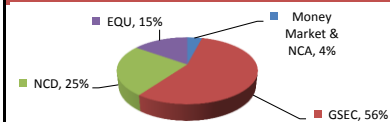
**AUM as on 30th Apr 2017 (Rs. In Lakhs)**

231.19

**Modified Duration (In Years)**

5.84

**ASSET ALLOCATION**



**PORTFOLIO AS ON 30th Apr 2017**

**SECURITIES HOLDINGS**

**MONEY MARKET INSTRUMENTS & NCA 4.07%**

**SECURITIES HOLDINGS**

**GOVERNMENT SECURITIES 55.99%**

8.08% Maharashtra SDL 15/06/2026	38.87%
8.67% Karnataka SDL 24/02/2026	11.80%
7.92% West Bengal SDL 15/03/2027	2.69%
7.77% Kerala SDL 01/03/2027	2.18%
Other	0.45%

**SECURITIES HOLDINGS**

**CORPORATE DEBT 24.72%**

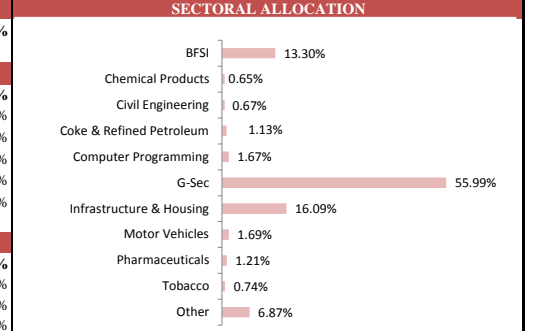
10.63% IOT Utkal Energy Services Ltd. 20/09/2028	6.07%
10.25% Reliance Gas Trans Infra Ltd. 22/08/2021	4.75%
8.43% LIC Housing Finance Ltd. 10/07/2026	4.50%
10.25% Reliance Capital Ltd. 31/10/2022	4.77%
9.37% TATA Capiti Financial Services Ltd. 31/03/2025	4.63%

**SECURITIES HOLDINGS**

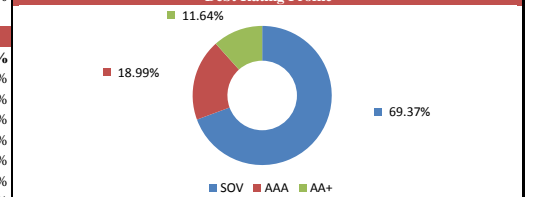
**EQUITY 15.22%**

HDFC Bank Ltd.	0.95%
Infosys Technologies Ltd.	0.91%
ITC Ltd.	0.74%
ICICI Bank Ltd.	0.69%
Larsen & Toubro Ltd.	0.67%
HDFC Ltd.	0.63%
Reliance Industries Ltd.	0.59%
TATA Motors Ltd.	0.49%
Sun Pharmaceuticals Industries Ltd.	0.49%
State Bank of India	0.46%
Axis Bank Ltd.	0.46%
TATA Consultancy Services Ltd.	0.44%
Mahindra and Mahindra Ltd.	0.38%
Maruti Suzuki India Ltd.	0.37%
Hindustan Unilever	0.31%
Oil & Natural Gas Corporation Ltd.	0.29%
TATA Motors Ltd. (DVR)	0.29%
Asian Paints Ltd.	0.28%
Power Finance Corporation Ltd.	0.24%
Hero MotoCorp Ltd.	0.24%
Coal India Ltd.	0.24%
Lupin Ltd.	0.23%
Castrol India Ltd.	0.22%
Bajaj Auto Ltd.	0.21%
Aurobindo Pharma Ltd.	0.20%
Other	4.19%

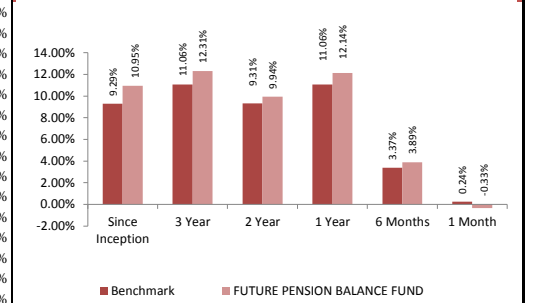
**SECTORAL ALLOCATION**



**Debt Rating Profile**

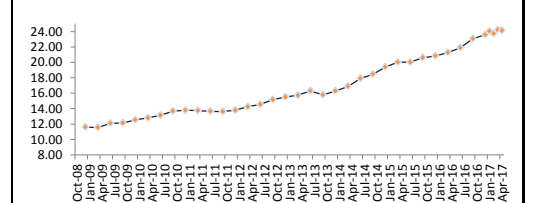


**BENCHMARK COMPARISON (CAGR RETURN)**



Benchmark : Nifty + CRISIL Composite Bond Index + CRISIL Liquid Fund Index

**FUND - NAV**



**ABOUT THE FUND**

**PORTFOLIO AS ON 30th Apr 2017**

**OBJECTIVE**  
Preservation of nominal value of contributions along with stable returns over policy term so that the probability of negative return is very low.

**Fund Manager Details**

Fund Manager	No. Of Funds Managed		
	Equity	Debt	Hybrid
Niraj Kumar	4	3	7
Pankaj	-	3	7

**ASSET ALLOCATION**

Composition	Min.	Max.	Actual
Money Market Instruments, Government Bonds and Corporate Bonds	0.00%	100.00%	100.00%
Equity	0.00%	0.00%	0.00%

**RISK RETURN PROFILE**

Risk	Low
Return	Low

**RATING**  
The rating of all the Corporate Debt in our portfolio is rated as AA or higher.

**DATE OF INCEPTION**  
17th October 2008

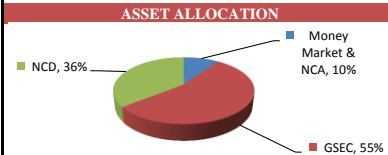
**FUND PERFORMANCE as on 30th Apr 2017**  
Returns since Publication of NAV

Absolute Return	135.72%
Simple Annual Return	16.01%
CAGR Return	10.64%

**NAV as on 28th Apr 2017**  
23.57161

**AUM as on 30th Apr 2017 (Rs. In Lakhs)**  
152.57

**Modified Duration (In Years)**  
5.48



**SECURITIES HOLDINGS**

**MONEY MARKET INSTRUMENTS & NCA** **9.66%**

**SECURITIES HOLDINGS**

**GOVERNMENT SECURITIES** **54.66%**

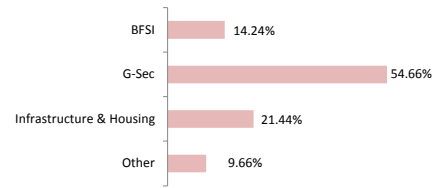
8.08% Maharashtra SDL 15/06/2026	51.97%
8.51% Andhra Pradesh SDL 17/02/2021	1.37%
7.77% Kerala SDL 01/03/2027	1.32%

**SECURITIES HOLDINGS**

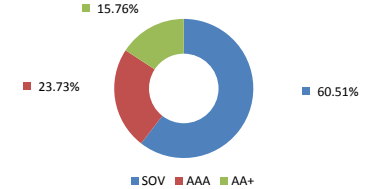
**CORPORATE DEBT** **35.67%**

10.25% Reliance Gas Trans Infra Ltd. 22/08/2021	7.20%
9.98% IL&FS Financial Services Ltd. 05/12/2021	7.17%
10.63% IOT Utkal Energy Services Ltd. 20/07/2028	7.06%
10.25% Reliance Capital Ltd. 31/10/2022	7.23%
9.37% TATA Capital Financial Services Ltd. 31/03/2025	7.01%

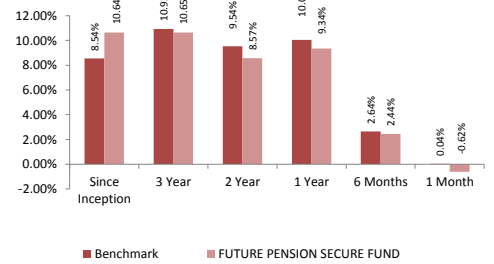
**SECTORAL ALLOCATION**



**Debt Rating Profile**

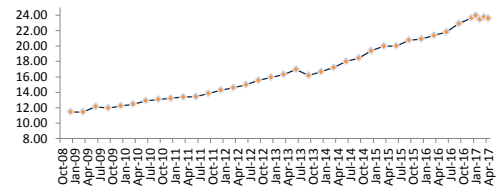


**BENCHMARK COMPARISON (CAGR RETURN)**



Benchmark : CRISIL Composite Bond Index

**FUND - NAV**



**ABOUT THE FUND**

**OBJECTIVE**  
Provision of high expected returns with a moderate probability of low return.

**STRATEGY**  
Investment in a spread of equities.  
Diversification by sector, industry and risk.

**Fund Manager Details**

Fund Manager	No. Of Funds Managed		
	Equity	Debt	Hybrid
Niraj Kumar	4	3	7
Biswarup Mohapatra	4	-	7
Pankaj	-	3	7

**ASSET ALLOCATION**

Composition	Min.	Max.	Actual
Fixed Interest Investment	40.00%	80.00%	64.76%
Money Market and Cash			
Equity	20.00%	60.00%	35.24%

**RISK RETURN PROFILE**

Risk	High
Return	High

**DATE OF INCEPTION**

30th March 2009

**FUND PERFORMANCE as on 30th Apr 2017**

Returns since Publication of NAV	
Absolute Return	98.48%
Simple Annual Return	12.48%
CAGR Return	9.08%

**NAV as on 28th Apr 2017**

19.84762

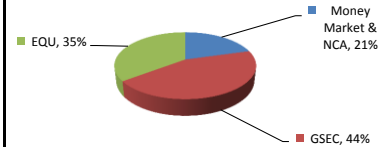
**AUM as on 30th Apr 2017 (Rs. In Lakhs)**

2.58

**Modified Duration (In Years)**

5.95

**ASSET ALLOCATION**



**PORTFOLIO AS ON 30th Apr 2017**

**SECURITIES**

**MONEY MARKET INSTRUMENTS & NCA** **20.64%**

**SECURITIES**

**GOVERNMENT SECURITIES** **44.12%**

7.72% Central Government 25/05/2025

8.67% Maharashtra SDL 24/02/2026

8.67% Karnataka SDL 24/02/2026

**SECURITIES**

**EQUITY** **35.24%**

TATA Motors Ltd. 3.38%

Lupin Ltd. 2.60%

ICICI Bank Ltd. 2.59%

Oil & Natural Gas Corporation Ltd. 2.39%

Coal India Ltd. 2.15%

Asian Paints Ltd. 1.74%

IndusInd Bank Ltd. 1.68%

Ambuja Cements Ltd. 1.43%

Grasim Industries Ltd. 1.34%

NTPC Ltd. 1.34%

Hero MotoCorp Ltd. 1.29%

HCL Technologies Ltd. 1.26%

ACC Ltd. 1.26%

Bajaj Auto Ltd. 1.11%

LIC Housing Finance Ltd. 1.04%

Dr. Reddys Laboratories Ltd. 1.01%

Tech Mahindra Ltd. 0.97%

Bank of Baroda 0.87%

Hindustan Petroleum Corporation Ltd. 0.83%

Ashok Leyland Ltd. 0.83%

Power Finance Corporation Ltd. 0.75%

Hindalco Industries Ltd. 0.70%

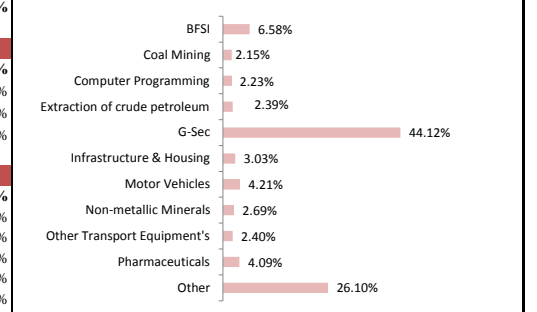
Power Grid Corporation of India Ltd. 0.57%

Divis Laboratories Ltd. 0.49%

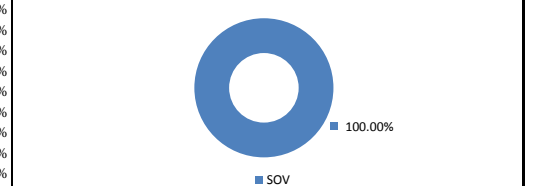
Axis Bank Ltd. 0.40%

Other 1.23%

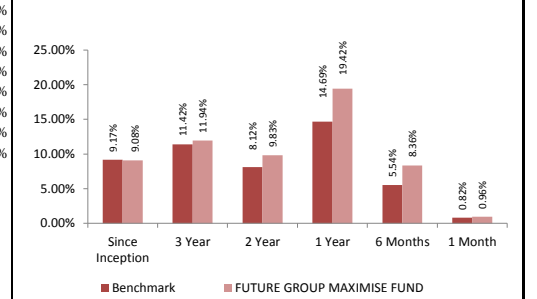
**SECTORAL ALLOCATION**



**Debt Rating Profile**

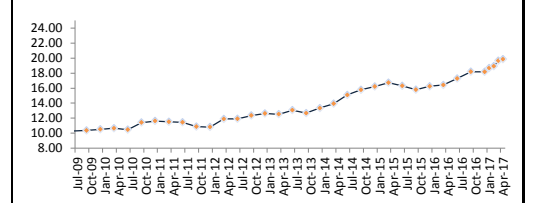


**BENCHMARK COMPARISON (CAGR RETURN)**



Benchmark : Nifty + CRISIL Composite Bond Index + CRISIL Liquid Fund Index

**FUND - NAV**



**ABOUT THE FUND**

**OBJECTIVE**  
Provision of high expected returns with a moderate probability of low return.

**STRATEGY**  
Balances high return and high risk from equity investments by the stability provided by fixed interest instruments.

**Fund Manager Details**

Fund Manager	No. Of Funds Managed		
	Equity	Debt	Hybrid
Niraj Kumar	4	3	7
Biswarup Mohapatra	4	-	7
Pankaj	-	3	7

**ASSET ALLOCATION**

Composition	Min.	Max.	Actual
Fixed Interest Investment	60.00%	90.00%	77.83%
Money Market and Cash			
Equity	10.00%	40.00%	22.17%

**RISK RETURN PROFILE**

Risk	Moderate
Return	High

**DATE OF INCEPTION**

15th February 2010

**FUND PERFORMANCE as on 30th Apr 2017**

Returns since Publication of NAV

Absolute Return	86.78%
Simple Annual Return	12.03%
CAGR Return	9.05%

**NAV as on 28th Apr 2017**

18.67783

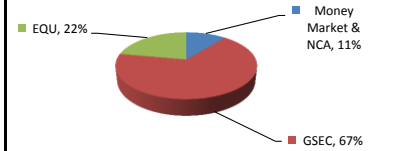
**AUM as on 30th Apr 2017 (Rs. In Lakhs)**

4.90

**Modified Duration (In Years)**

6.28

**ASSET ALLOCATION**



**PORTFOLIO AS ON 30th Apr 2017**

**SECURITIES HOLDINGS**

**MONEY MARKET INSTRUMENTS & NCA 10.94%**

**SECURITIES HOLDINGS**

**GOVERNMENT SECURITIES 66.90%**

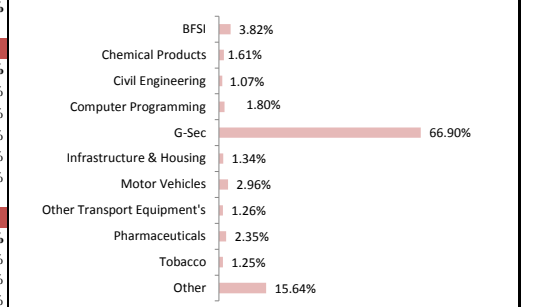
7.92% West Bengal SDL 15/03/2027	21.16%
8.67% Maharashtra SDL 24/02/2026	17.82%
8.38% Tamil Nadu SDL 27/01/2026	10.93%
7.72% Central Government 25/05/2025	10.53%
8.67% Karnataka SDL 24/02/2026	6.46%

**SECURITIES HOLDINGS**

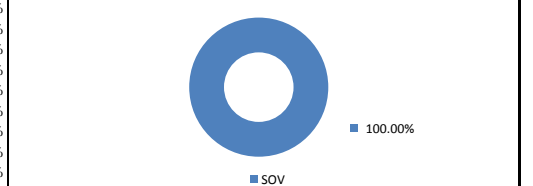
**EQUITY 22.17%**

ICICI Bank Ltd.	1.54%
Maruti Suzuki India Ltd.	1.33%
TATA Motors Ltd.	1.31%
ITC Ltd.	1.25%
Infosys Technologies Ltd.	1.13%
Larsen & Toubro Ltd.	1.07%
Axis Bank Ltd.	0.94%
Lupin Ltd.	0.82%
Oil & Natural Gas Corporation Ltd.	0.80%
Coal India Ltd.	0.79%
Hindustan Unilever	0.76%
Aurobindo Pharma Ltd.	0.74%
Asian Paints Ltd.	0.69%
Hero MotoCorp Ltd.	0.68%
IndusInd Bank Ltd.	0.59%
Bajaj Auto Ltd.	0.58%
Dr. Reddys Laboratories Ltd.	0.53%
Grasim Industries Ltd.	0.47%
Ambuja Cements Ltd.	0.45%
LIC Housing Finance Ltd.	0.41%
Power Finance Corporation Ltd.	0.39%
Power Grid Corporation of India Ltd.	0.38%
Bank of Baroda	0.34%
Tech Mahindra Ltd.	0.34%
HCL Technologies Ltd.	0.33%
Other	3.49%

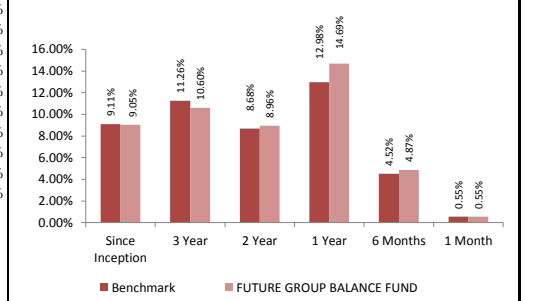
**SECTORAL ALLOCATION**



**Debt Rating Profile**



**BENCHMARK COMPARISON (CAGR RETURN)**



Benchmark : Nifty + CRISIL Composite Bond Index + CRISIL Liquid Fund Index

**FUND - NAV**

